



CUSTOMISED TO PERFECTION

Serving counter tops and a mobile serving solution for professional serving and pouring by KUGEL Edelstahlverarbeitung.



SOMETHING'S ON THE MOVE

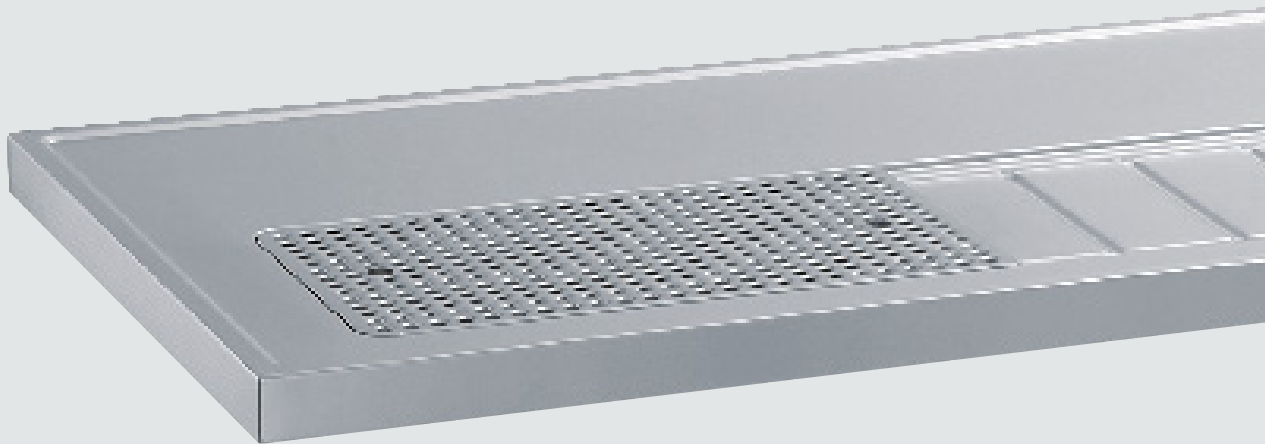
At serving counters, everything needs to run like clockwork – safe, brisk and absolutely hygienic. Top surfaces from Kugel Edelstahlverarbeitung easily meet such requirements: robust, durable and easy to clean with practical features and an ergonomic design.

Masterpieces.

Serving counter tops with large dimensions are also deep-drawn from one piece – in one of the largest deep-drawing systems in Europe. In this, we are masters. After all, we unite decades of experience in stainless steel processing with constant further development, profound expertise, cutting-edge technology and innovation.

From a good family.

Quality and permanent innovation. Function, yet perfect design. That's what makes KUGEL Edelstahlverarbeitung's philosophy and its products stand out along with its committed employees and first-rate service, from planning to delivery. These distinctive characteristics and standards also apply to BLANCO Professional. The similarity stands out a mile – we belong to the same family, after all.



Scrupulous hygiene guaranteed.

Cleanliness and hygiene are top priorities in the serving area. Products by Kugel Edelstahlverarbeitung create the ideal conditions to guarantee this with flawless machining that ensures all surfaces are incredibly easy to clean. Many features prove their worth on a daily basis: rounded corners, drip trays with deep-drawn, round sieve-holes and seamless welded transitions. Dirt doesn't even stand a chance.

Bespoke or ready-made, a perfect fit.**Tried-and-tested in series.**

After many years of system experience in construction projects, we know exactly what is important. We are familiar with all standard counter dimensions and criteria for serving counter tops and match our standard models to these specifications. This means your project is easily completed in next to no time. And everything will fit. From the word go.

Small quantity. Small extra charge.

That's not what you'd expect: it's usually the other way round. But KUGEL Edelstahlverarbeitung's rubber-padded tools make it possible: even small lot sizes can be produced in series at just a slight extra cost.

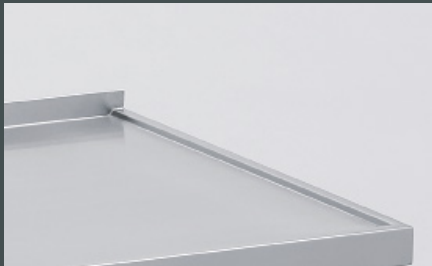
Extra dimensions. Extra class.

Standard measurements do not always fit everywhere. Some customers also have special requirements. In such cases, our experienced specialists develop, manufacture and deliver bespoke items and designs.

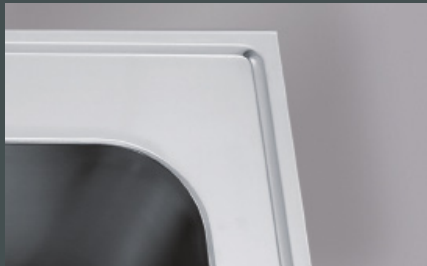


PURE PERFECTION.

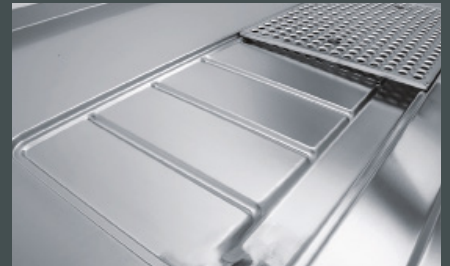
The height of hygiene. Serving counter tops by KUGEL Edelstahlverarbeitung exude perfect quality down to the tiniest detail, from high-grade materials and craftsmanship through to tried-and-tested function.



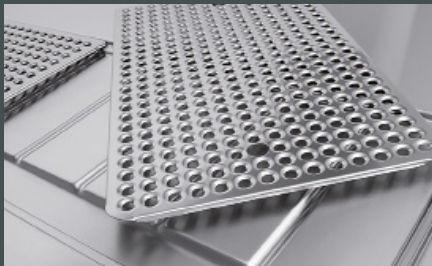
Serving counter tops in all sizes with or without rear bevel.



Uncompromisingly hygienic design in all wet sections and basins.



Deep-drawn drip tray with drain channels – ensuring the counter stays dry at all times.



The side chamfer on the convex perforated panels provides greater stability.



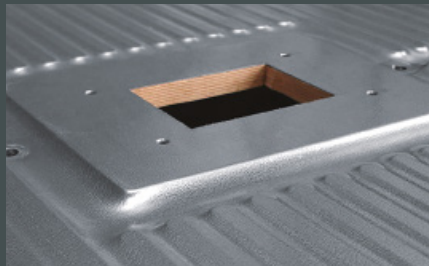
The convex perforated panel upper edge is completely flush with the serving counter top.



Glass rinsers are available for conical grooves and drip trays.



Basins deep-drawn from a single piece and seamlessly welded into the top surface.



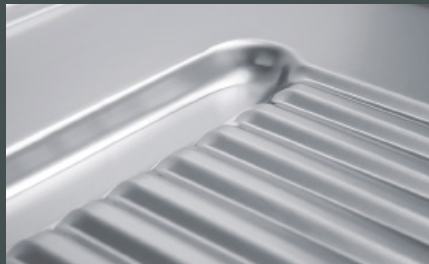
Custom-fit cut-outs, beer tap mounts and recesses provided on site.



Customised worktops and serving counter tops in all sizes.



All corners on the top surfaces and worktops are stylishly welded.



Cleaning-friendly curves in all indentations thanks to deep-drawing technology.



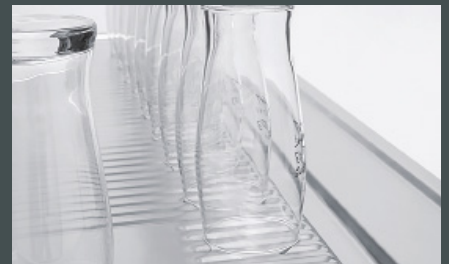
Deep-drawn conical grooves with slight incline to drain top to ensure a dry surface.



With the conical groove version, the glass rinser is welded into the work surface in a form-fitting manner.



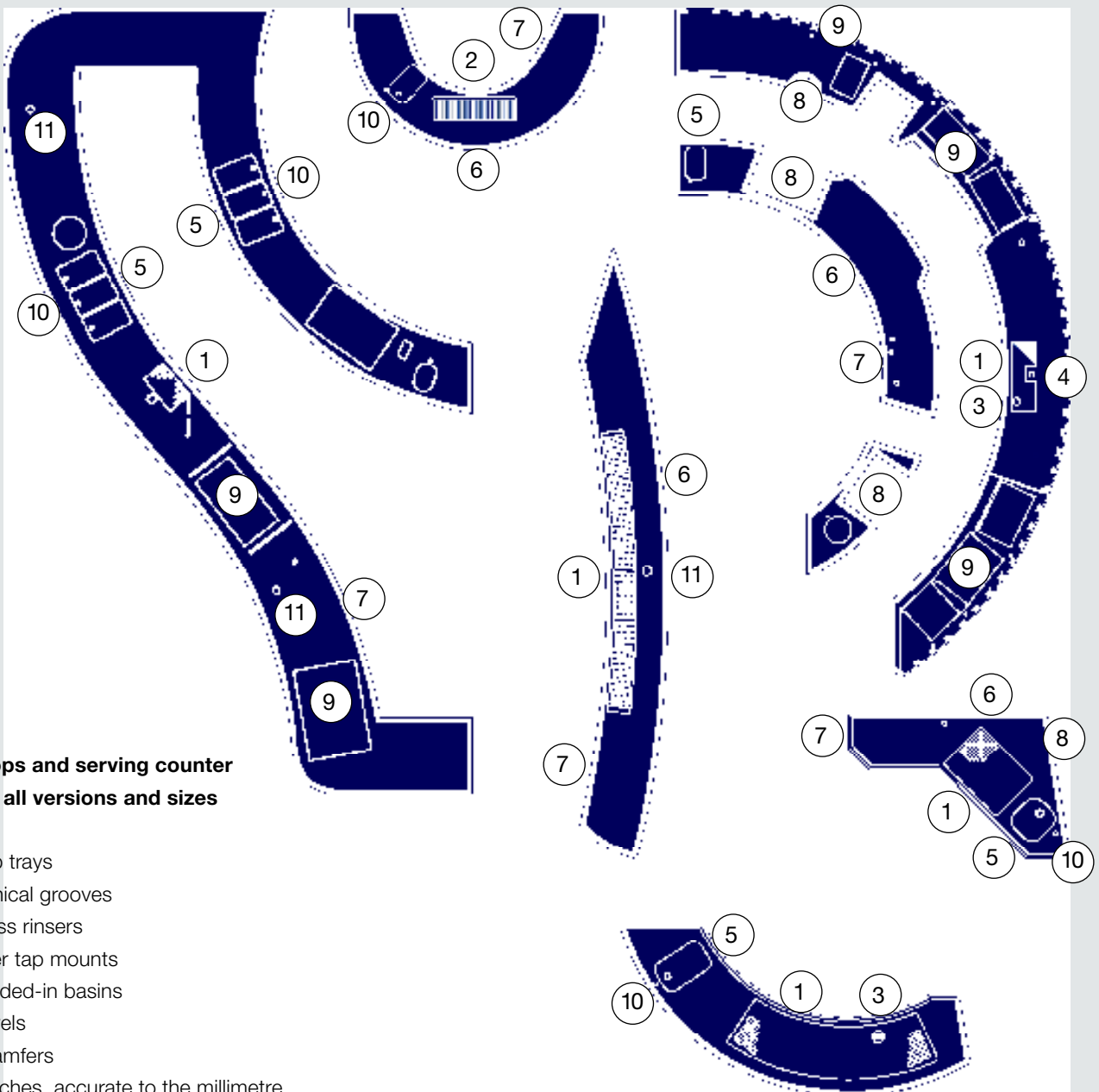
Worktops and serving counter tops are also available in copper or brass.



The upper edges of the conical grooves are flush with the work surface.

WHAT WILL IT BE?

Serving counter tops and worktops in every conceivable size and shape, for infinite variations. KUGEL Edelstahlverarbeitung makes everything possible, fulfilling customers' every wish.



Worktops and serving counter tops in all versions and sizes

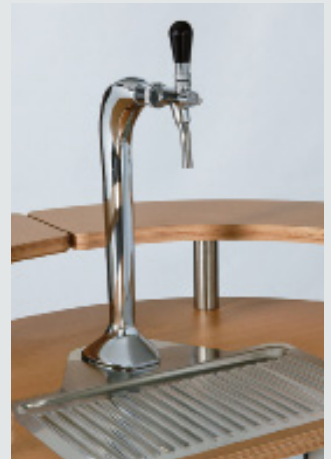
- 1) Drip trays
- 2) Conical grooves
- 3) Glass rinsers
- 4) Beer tap mounts
- 5) Welded-in basins
- 6) Bevels
- 7) Chamfers
- 8) Notches, accurate to the millimetre
- 9) Cut-outs
- 10) Taps and mixer taps
- 11) Holes

PLEASURE TO GO.

The KUGEL beer drawing station provides freshly drawn pleasure to guests: **at the buffet in the dining hall, in the open air at a terrace party or for catering party services.**

Impressive.

Function and design complement one another, as always at KUGEL Edelstahlverarbeitung. Easy to clean thanks to rounded corners, a groove in the work surface and a cannister for overflowing beer, guaranteeing that hygiene standards are always met, too, wherever the venue. A stainless-steel body with decorative ventilation slits. An attractive storage surface made of wood. A stylish foot rest and impact absorber in one. A classically elegant tap. This makes the beverage drawing station a real eye-catcher and inviting meeting point.



Highly useful. Small dimensions.

There is room for 1 x 50 litres or 2 x 30 litres in the tap compartment, yet the beer drawing station will effortlessly fit through any door thanks to its dimensions – easy to move thanks to four sturdy castors, which also secure the station into position. What more could you want?



In action.

Insert the plug into a 230V/50Hz socket and the drawing station is ready for use. The integrated continuous flow cooler can be activated at any time – just in time.



KUGEL Edelstahlverarbeitung

Perfection impresses: KUGEL Edelstahlverarbeitung is a specialist in high-grade, specific-purpose structures made of stainless steel. As a system supplier, we give advice and support to our customers, covering everything from development to final assembly for the main application fields: Railway, Medical, Industrial and Catering.

KUGEL Edelstahlverarbeitung is an independent subsidiary of the BLANCO Professional Group. BLANCO Professional and KUGEL Edelstahlverarbeitung have been certified to EN ISO 9001:2008 in all business units. This guarantees you maximum reliability and customer orientation.

KUGEL Edelstahlverarbeitung GmbH
Prof.-Hermann-Staudinger-Str. 6
94234 Viechtach
Germany
Phone +49 9942 950-0
Fax +49 9942 950-299
info@kugel-edelstahl.de
www.kugel-edelstahl.de

